

MARIJUANA IS NO JOKE

Gateway to Other Drugs

- Marijuana acts like a powerful neurotransmitter, and works on the same superfamily of neural receptors as heroin.²
- Marijuana primes the brain to seek stronger drugs.²
- Marijuana users are more likely than non-users to use heroin and abuse pharmaceutical opioids.¹⁴



Marijuana and the Brain¹³

- Causes and exacerbates: **Addiction, Depression, Psychosis, Schizophrenia, Hallucinations**
- Psychotic breaks / Violent acts / Anxiety
- Loss of memory, perception, motor skills
- Mental degeneration

Drugged Driving

- Driving tests show marijuana impairs reaction times, divided-attention tasks, lane-position variability (weaving), peripheral vision, cognitive function & coordination.¹
- **1 of every 8 traffic fatalities** in Colorado are marijuana related (+32% increase).¹⁰
- Marijuana driving deaths doubled in one year after legalization in Washington State.¹¹
- For every 1 marijuana-user death, .7 innocents die (pedestrians, bicyclists, passengers, etc.)⁵
- Combining marijuana with alcohol increases impairment up to 8 times.¹



Teen Use/Users

- Increases dramatically wherever marijuana is legalized.^{12, 17}
- Causes irreversible IQ loss up to 8 points and higher likelihood of Amotivational Syndrome.⁸
- **1 in 6 teens who try marijuana will become addicted.**⁷
- Heavy users are less likely to graduate.⁹
- **7x increase in suicide attempts.**⁹
- Big Marijuana's goal: teen users today become lifetime consumers.
- **"No amount of marijuana is safe for adolescents."** - Surgeon General (2019)¹⁵
- **Yet,** vaping and edibles are a favorite way for youth to use.

Fetal Risk

- The Surgeon General¹⁵ and FDA¹⁶ strongly advise against marijuana use during breastfeeding and pregnancy, because THC gets stored in milkfat and transmitted to the baby.
- THC also crosses the placental and blood/brain barrier, affecting the baby in utero - making it more susceptible to:
 - Lower birth weight
 - Addiction later in life
 - Birth defects & cancers
 - Problem solving, attention and learning difficulties later in life⁴
- Studies show genetic changes in offspring of heavy users.⁶



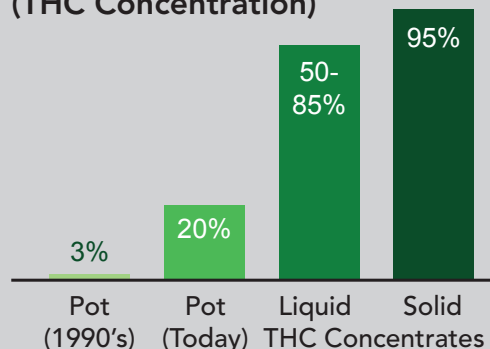
POTENCY:

Marijuana (a.k.a. Cannabis) today is

10-40x stronger than 20 years ago

THC (the mind-altering chemical in marijuana that gets a user high) is a hallucinogenic drug. It is stored in fat tissue and is slowly released back into the blood stream keeping THC in the body for many days, even weeks after the pot is used. This THC continues to negatively affect memory and emotional processing, organs and bodily systems.³

TETRAHYDROCANNABINOL (THC Concentration)



www.AALM.info

916-708-4111 • 619-990-7480

Americans Against Legalizing Marijuana

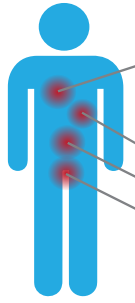
Email CarlaDLowe@aol.com for Print-Ready PDF

SOURCES: 1- R Hartman, M Huestis "Cannabis Effects on Driving Skills", Clin Chem 2013. 2- Dr. Forest Tennent and NIDA. 3- R Holmes MD, Florida Alliance for Drug Endangered Children "Health Consequences of Using MJ: Effects on Infants, Children and Young Adults" 4- E. Fride, J Neuroendocrinol. 2008; 20:75-81 & EC Blume -UNC, Cancer Causes Control. 2006 June 17, (5):663-9. 5 - Fatality Analysis Reporting System, 2014 & 2015, National Highway Safety Transportation Administration. 6 - E Sassenrath, UC Davis Primate Research Ctr and Neuropsychopharmacology, 2014 May 39 (6): 1315.23. 7 - NIDA, "The Science of Drug Abuse and Addiction", by Dr. Nora Volkow referencing Monitoring the Future Study, 2010. 8 - Dr. M. Seal, Melbourne University, APP article, "MJ causes brain damage", August 2012. 9 - E Silins, et al 2014, "Young Adult Sequelae of Adolescent Cannabis Use - an Integrative Analysis" Arendt et al 2006; Kvitland et al 2016; Clark et al 2014. 10 - Rocky Mountain HIDTA, 2015. 11 - AAA "Driving under the influence" Foundation for Traffic Study, May 2016. 12 - US Dept. Health & Human Services - SAMSHA 13 - Dr. B Madras, Professor of Psychobiology, Dept of Psychiatry, Harvard School NIDA. 14 - "Cannabis Use and risk of Prescription Opioid Use Disorder in the US" Olsson, Wall, Liu, Blanco, September 2017. 15 - VADM Jerome Adams, Surgeon General - August 29, 2019. 16 - www.fda.gov; Nora Volkow NIDA. 17 - Monitoring the Future 2017-2019



Heavy marijuana use is linked to downward social class mobility, anti-social behaviors, and relationship conflict.⁷

Less than 1% of all state prisoners are in jail for simple possession.¹⁷



Physical Health Impacts

LUNGS: Smoke from marijuana contains 4-5x the toxins, irritants & carcinogens as tobacco smoke; 20 times more ammonia.⁹
Increases likelihood of **HEART ATTACK**⁹
IMMUNE SYSTEM is weakened²⁴
Negatively impacts **REPRODUCTIVE SYSTEM**⁶
DEATH RATE 4x higher than non-users.¹³

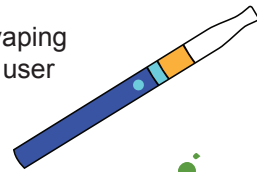


Crime

- **64.3%** of men and **66.1%** of women inmates are addicted to marijuana, other drugs and/or alcohol.⁴
- Marijuana is strongly linked to violent crime.¹⁹
- **Guns** are common at both large and home cultivation (grow) sites.²³

Vaping

- Liquid THC concentrate heated in “vaping” devices (aka e-cigarettes) creates a cancer-causing aerosol with little smell.
- A majority of 2019 lung injuries and vaping-related deaths (EVALI) involved THC.¹⁸
- THC compromises the immune system;²⁴ vaping marijuana can hurt the lungs; both make a user more vulnerable to COVID-19.²²



Butane Hash Oil (BHO)

- Increases THC potency to 90+%¹¹
- Causes severe “high.”
- As dangerous to make and consume as meth.
- Easily causes **explosions and fires** in neighborhoods where cooked.
- AKA *dabs, wax, budder, shatter, and solid THC concentrate.*



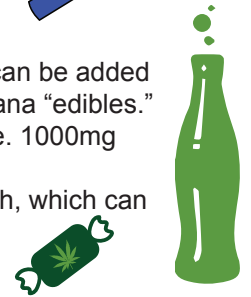
Marijuana is Big Money (but not for the community)

- One plant can bring \$2,000 to \$4,000 annually to a grower/distributor.
- **Black Markets still thrive after legalization.**⁸
- Tax revenues from pot sales do NOT cover **increased** crime, health care or addiction services. Revenues are projected to be less than .003% of total CA state tax revenue.²
- Cost of law enforcement increases, not decreases with legalization.¹⁶
- CA already has 50,000 illegal cultivation sites that supply 60% of marijuana to the US.³



Edibles

- Liquid and solid THC concentrates can be added to any food or drink, creating marijuana “edibles.”
- Potency can be extremely strong, i.e. 1000mg THC/cookie.
- Edibles take longer to produce a high, which can lead to over consumption and THC overdose/psychosis.¹⁹



Marijuana is NOT Earth-Friendly¹⁰

- 1 plant uses 6 gallons of water per day.
- Streams diverted to grow sites kill plants & animals downstream.
- Poisons and illegal fertilizers contaminate streams and forests.¹⁵
- These contaminate marijuana products as well.
- Carbofuron is illegal but commonly used at grow sites - 1/8 teaspoon can kill a 300 lb. bear.¹⁵



Is Marijuana Really Medicine?

The Federal Food and Drug Administration confirms that whole plant marijuana and THC concentrates are **NOT** medicine.

- Components may have medicinal value, i.e. CBD (Cannabidiol).⁵
- To protect the public, the FDA testing and approval process must be used to determine THC & CBD drug safety, dosing efficacy, side effects, potency, duration, interactions, etc.
- Pot shop “baristas” – acting like medical professionals – recommending a psychoactive drug (THC) make medical conditions worse (e.g. PTSD, pediatric seizures, glaucoma and even pain).¹⁴
- Any business selling CBD (unapproved by FDA) put users at great risk.

*“First, Do No Harm”
Marijuana is harmful*



Marijuana Industry Liability

- Marijuana businesses can be sued for contamination, environmental damage, and harming unborn children.
- Marijuana users can be sued for causing car crashes.
- Marijuana as medicine can be medical malpractice.²⁰

US MEDICAL ORGANIZATIONS OPPOSE MARIJUANA USE¹⁴

*American Medical Association • American Cancer Society • American Epilepsy Society
American Academy of Pediatrics • American M.S. Society • National Eye Institute
American Lung Association - and others*

SOURCES: 2 – State of California 2015-2016 Full Budget, Alcohol tax revenue. 3 - Senator Mike McGuire & Asm Mike Wood, 2015. 4 - CASA - Behind Bars II - Research Project. 5 - NFIA – National Families in Action, 2015, FDA, NIDA. 6 -VK Cortessis MSPH PhD 2012. 7 - UC Davis study, March 2016, “Persistent Cannabis Dependence ... A Longitudinal Cohort Study.” 8 - Washington Post, April 14, 2016, “Dozens arrested in Denver-area pot raids targeting exporters.” 9 - Dr. B Madras, Professor of Psychobiology, Dept of Psychiatry, Harvard School. 10 - California Fish & Game Warden Association, 2010. 11 - Keith Graves, PD - Graves & Associates. 12 - U.S. Dept. Health & Human Services - SAMSHA. 13 - Callahan et al, Dr. Bertha Madras for American Medical Association Claims 15 - www.silentpoison.com <http://www.silentpoison.com> 16 - Colorado and California Police Chiefs Association 17 - “Who’s Really in Prison for Marijuana” - ONDCP 18 - CDC weekly EVALI webinars, beginning Sept 2019 19 - “Tell Your Children: The Truth About Marijuana, Mental Illness and Violence” - Berenson on Amazon.com 20 - CIVEL.org 21 - <https://www.drugabuse.gov/publications/drugfacts/marijuana> 22 - Dr. Nora Volkow, Director of NIDA, March 2020 23 - Sheriff & Coroner Jon Lopey, Siskiyou County 24 - Respiratory and Immunologic Consequences of Marijuana - <https://accp1.onlinelibrary.wiley.com/doi/abs/10.1002/j.1552-4604.2002.tb06006.x>